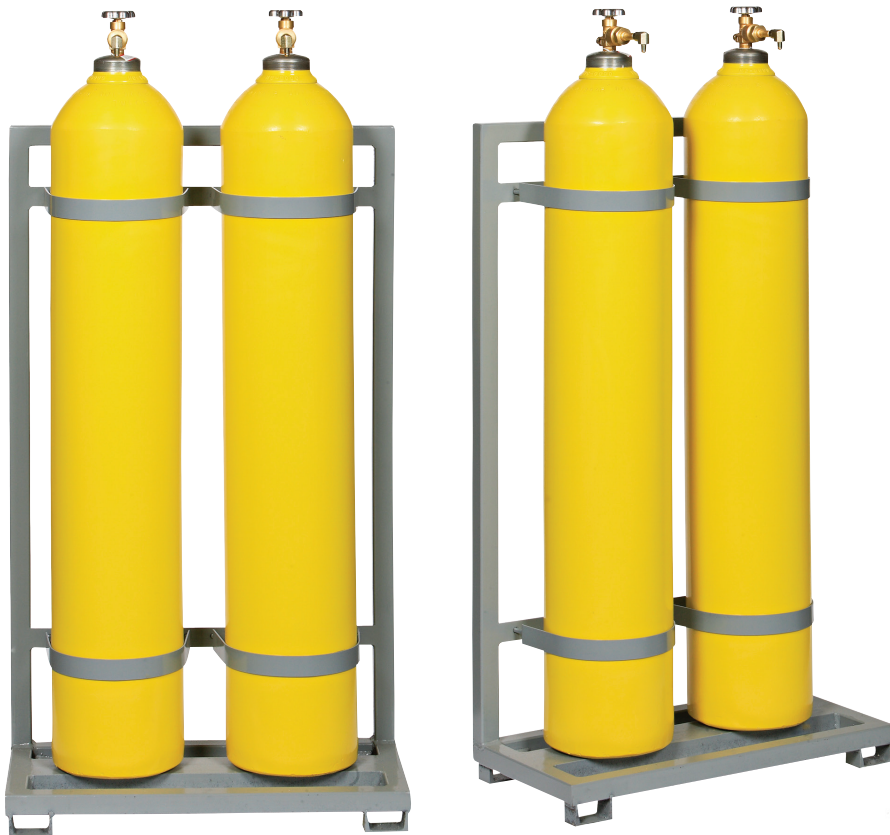




BREATHING AIR CONTROL PANELS AND ACCESSORIES

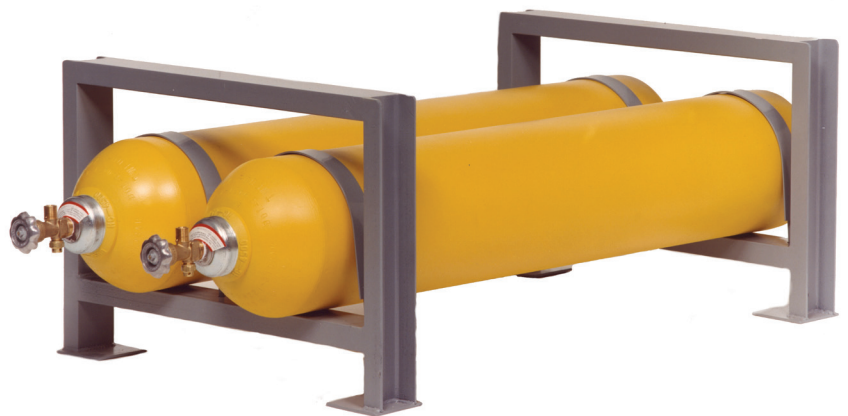
BREATHING AIR INDIVIDUALLY PIPED CASCADE SYSTEM



SCBAS, Inc cascade systems come in different pressures, 4500 PSI, 5000 PSI, and 6000 PSI

With an individually piped system, each cylinder must have its own hose that is routed to a distribution manifold or air control panel (such as SCBAS Inc series HPM manifolds or FP series air control panels). The cascading sequence is then controlled at the distribution unit instead of at the storage cylinders themselves. The storage cylinder valves are all opened, but you control the system from a remote location, usually being a manifold or air control panel.

This system works very well when mounting a cascade system in an apparatus where the storage cylinders will be difficult to get to, or in your station when you want to fill your SCBA cylinders in a different room than your storage system is located. This configuration is also used with fill enclosures and or breathing air systems that have their own cascade controls systems.



Helping you breath a little easier.

Phone: 800-747-7442 • 309-444-7442 Fax: 309-444-3180 scbas.com